



# TELESCOPIC BOOM LIFT

## T22J (T72J)

High Capacity  
High Productivity

### HIGHLIGHTS

The T22J with the working height of 23.8m is specially developed for the market by LGMG with a larger platform and heavy load, dual lift capacity. It can carry more materials in daily work and improve work efficiency.

- Dual-capacity design with 300kg unrestricted and 450kg restricted.
- 2.44×0.9m extra-large platform, three-door design, more convenient for material handling.
- Four-wheel drive, 45% climbing ability, better passability and rough terrain ability.
- Continuous 360° turntable rotation expands the operational area.
- A swing-out engine tray is convenient for regular maintenance and repair.

# LGMG Telescopic Boom Lift

## SPECIFICATIONS

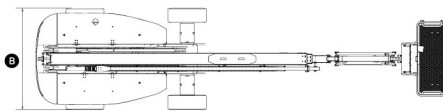
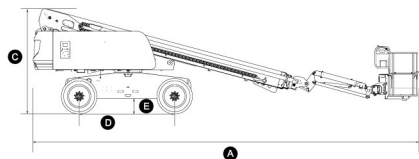
MODELS	T22J (T72J)	
Measurements	Metric	US
Work Height Max.	23.8m	78ft
Platform Height	21.8m	71.5ft
Horizontal Outreach	17.5m	57.4ft
Below Ground Reach	2.3m	90.5in
Platform Length	2.44m	96in
Platform Width	0.9m	35in
Platform Capacity	300/450kg	661/992lbs
<b>A</b> Stowed Length	10.6m	417in
<b>B</b> Overall Width	2.49m	98in
<b>C</b> Stowed Height	2.79m	110in
<b>D</b> Wheelbase	2.51m	99in
<b>E</b> Ground Clearance	0.395m	15.5in

PRODUCTIVITY		
Max. Platform Occupants	2(300kg) / 3(450kg)	2(661lbs) / 3(992lbs)
Turntable Rotation	360° continuous	360° continuous
Turntable Tailswing	1.2m	3.9ft
Drive Speed-Stowed	4.8km/h	3mph
Drive Speed-Raised	0.8km/h	0.5mph
Gradeability-Stowed	45%	45%
Max. Wind Speed	12.5m/s	28mph
Turning Radius-Inside	2.5m	8.1ft
Turning Radius-Outside	5.5m	17.8ft
Max.Slope	4.5° / 4.5°	4.5° / 4.5°
Drive Mode	4W Drive,FWS	4W Drive,FWS
Tires Type	RT Foam-filled	RT Foam-filled
Tires Size	355/55D 625	355/55D 625

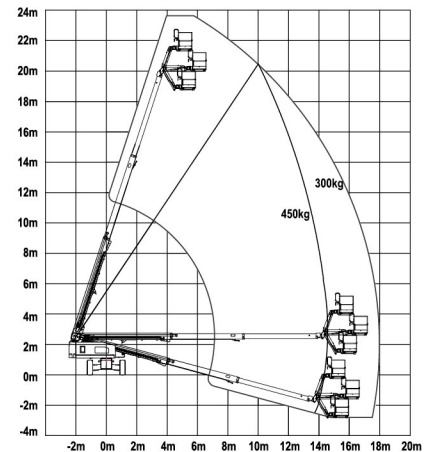
POWER		
Power	Deutz D 2.9L4	Deutz D 2.9L4
Fuel Tank Capacity	100L	26.4gal

HYDRAULIC SYSTEM		
Hydraulic Oil Capacity	180L	47.5gal

WEIGHT		
Machine Weight	12300kg	27117lbs



### T22J WORKING RANGE



### STANDARD FEATURES

- Proportional control
- Overload sensing system
- Descent alarm with flashing beacon
- Platform auto-leveling system
- Emergency stop button
- On-board diagnostic system
- Oscillating axle
- 4W drive and 4W break
- Over tilt protection system
- Anti-entrapment protection
- Platform control unit cover
- Hydraulic oil automatic cooling system

### OPTIONAL

- AC power to platform
- Platform tool box
- Telematics
- Hydraulic generator
- Non-marking tires
- Solid tires
- Euro V engine
- T4F engine

Machines in compliant with EN280 / ANSI 92.20 Standard.

Specifications subject to change without notice. Photos and diagrams in the page are for promotional purposes only. 2021 V1 Version

## LINGONG GROUP JINAN HEAVY MACHINERY CO., LTD.

Address: No. 2676, Kejia Road, Jinan, Shandong, China  
 Email: sales@lgmg.com.cn Tel: +86 531 6787 9283

## LGMG Europe B.V.

Address: Laanweg 16 3208LC Spijkensisse Rotterdam, The Netherlands

## LGMG North America, Inc.

Address: 1445 Sheffler Dr, Chambersburg, PA. 17201, USA



RELIABILITY IN ACTION